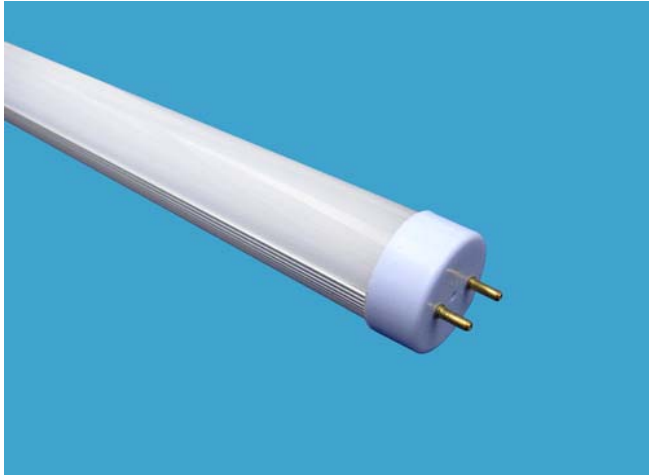


Technische Daten der LED-Röhren

4 0.6M T8 SMD LED fluorescent tube



COTRONIC Art.-Nr.: 710-1104 (warm weiß, 26mm)

COTRONIC Art.-Nr.: 710-1101 (pure weiß, 26mm)

Product Features:

P/N: LL-T8S60W-F milchige Abdeckung

Socket:G13

Size: 600X ϕ 26mm

LED Qty: 126 PCS (3528 SMD LED)

Light Output: 604lm/668 lm

Power Consumption: 9W

Color:Warm White or Pure White

Color Temperature: 3000-3500K, 6000-6500K

Operating Voltage: AC85-260V

Rendering Index:80

Power Factor:0.95

Work Frequency: 50HZ

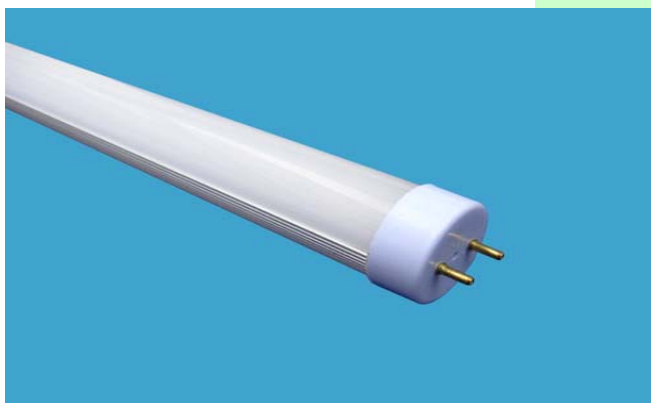
Aluminum back for heatsinking + frosted polycarbonate front cover

Working without ballast.

No RF interference

No flickering or buzzing

No Mercury and other hazardous materials, fully RoHS-compliant



COTRONIC Art.-Nr.: 710-1105 (warm / weiß, 26mm)

COTRONIC Art.-Nr.: 710-1102 (pure / weiß, 26mm)

5 1.2 M T8 SMD LED fluorescent tube

Product Features:

P/N: LL-T8S120W-F - milchiger Abdeckung

Socket:G13

Size: 1200X ϕ 26mm

LED Qty: 252 PCS (3528 SMD LED)

Light Output: 1209lm/1336 lm

Power Consumption: 16W

Color:Warm White or Pure White

Color Temperature: 3000-3500K, 6000-6500K

Operating Voltage: AC85-260V

Rendering Index:80

Power Factor:0.95

Work Frequency: 50HZ

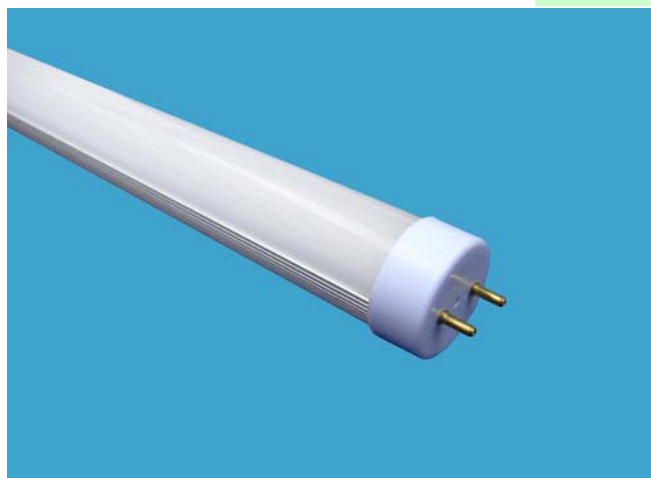
Aluminum back for heatsinking + frosted polycarbonate front cover

Working without ballast.

No RF interference

No flickering or buzzing

No Mercury and other hazardous materials, fully RoHS-compliant



COTRONIC Art.-Nr.: 710-1106 (warm/ weiß, 26mm)

COTRONIC Art.-Nr.: 710-1103 (pure / weiß, 26mm)

6 1.5 M T8 SMD LED fluorescent tube

Product Features:

P/N: LL-T8S150W-F - milchiger Abdeckung

Socket:G13

Size: 1500X ϕ 26mm

LED Qty: 342 PCS (3528 SMD LED)

Light Output: 1642lm/1812 lm

Power Consumption: 20W

Color:Warm White or Pure White

Color Temperature: 3000-3500K, 6000-6500K

Operating Voltage: AC85-260V

Rendering Index:80

Power Factor:0.95

Work Frequency: 50HZ

Aluminum back for heatsinking + frosted polycarbonate front cover

Working without ballast.

No RF interference

No flickering or buzzing

No Mercury and other hazardous materials, fully RoHS-compliant

1 0.6M T8 SMD LED fluorescent tube



COTRONIC Art.-Nr.: 710-1114 (warm weiß- 26mm)
COTRONIC Art.-Nr.: 710-1111 (pure weiß- 26mm)

Product Features:

P/N: LL-T8S60W-T- Transparente Abdeckung

Socket:G13

Size: 600X ϕ 26mm

LED Qty: 126 PCS (3528 SMD LED)

Light Output: 680lm/756 lm

Power Consumption: 9W

Color:Warm White or Pure White

Color Temperature: 3000-3500K, 6000-6500K

Operating Voltage: AC85-260V

Rendering Index:80

Power Factor:0.95

Work Frequency: 50HZ

Aluminium back for heatsinking + transparent polycarbonate front cover

transparent polycarbonate front cover

Working without ballast.

No RF interference

No flickering or buzzing

No Mercury and other hazardous materials, fully RoHS-compliant

Á

***1.2 M T8 SMD LED fluorescent tube

Product Features:

P/N: LL-T8S120W-T - Transparente Abdeckung

Socket:G13

Size: 1200X ϕ 26mm

LED Qty: 252 PCS (3528 SMD LED)

Light Output: 1360lm/1512 lm

Power Consumption: 16W

Color:Warm White or Pure White

Color Temperature: 3000-3500K, 6000-6500K

Operating Voltage: AC85-260V

Rendering Index:80

Power Factor:0.95

Work Frequency: 50HZ

Aluminum back for heatsinking + transparent polycarbonate front cover

Working without ballast.

No RF interference

No flickering or buzzing

No Mercury and other hazardous materials, fully RoHS-compliant



COTRONIC Art.-Nr.: 710-1115 (warm weiß - 26mm)
COTRONIC Art.-Nr.: 710-1112 (pure weiß - 26mm)

3 1.5 M T8 SMD LED fluorescent tube



COTRONIC Art.-Nr.: 710-1116 (warm weiß- 26mm)
COTRONIC Art.-Nr.: 710-1113 (pure weiß- 26mm)

Product Features:

P/N: LL-T8S150W-T

Socket:G13

Size: 1500X ϕ 26mm

LED Qty: 342 PCS (3528 SMD LED)

Light Output: 1848lm/2052 lm

Power Consumption: 20W

Color:Warm White or Pure White

Color Temperature: 3000-3500K, 6000-6500K

Operating Voltage: AC85-260V

Rendering Index:80

Power Factor:0.95

Work Frequency: 50HZ

Aluminum back for heatsinking + transparent polycarbonate front cover

Working without ballast.

No RF interference

No flickering or buzzing

No Mercury and other hazardous materials, fully RoHS-compliant

Technische Daten der LED-Röhren.